



# Biblically Responsible Investing

ETHICALLY CONSCIOUS MONEY  
MANAGEMENT STRATEGIES

 **CFD COMPANIES**  
GROW WITH US

NOT FOR CLIENT USE



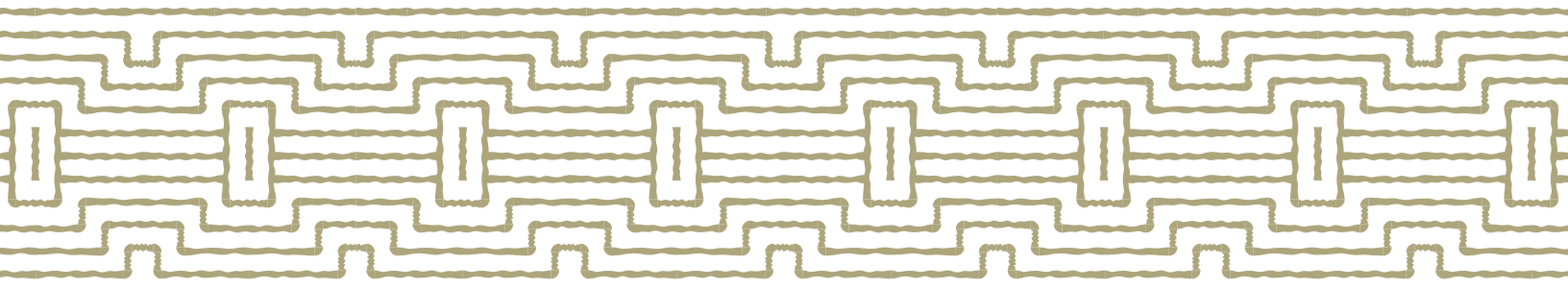
## Driven by Compassion / Guided by Beliefs

As investment strategies continually evolve, the CFD Companies remain committed to the progress of intentional, values-driven investing. Our Biblically Responsible Investing approach is not just about financial growth; it's about nurturing investments that positively impact the world and align with our moral compass. Our talented money management team, including two CFAs, identifies and employs investment strategies that strive to avoid participation in, or profit from, activities that contribute to the suffering or marginalization of others.

This philosophy of aligning investments with integrity reflects our 40-year commitment to empowering financial professionals and their clients. At CFD, investing is more than a transaction; it's a journey towards mutual growth, underpinned by partnership, autonomy, and moral responsibility. Our approach resonates with the ethos of 'Your goals, our commitment,' ensuring that the measure of investment success is inclusive of both profit and principles.

## Partner with Shared Belief

We believe the next step in the evolution of Biblically Responsible Investing requires more than acceptance. We believe the next level of growth will require firms and advisers who share a passion for principled investing to come together in partnership. What would it mean to your business and clients to partner with a firm that doesn't just allow BRI, but believes in it as a mission to demonstrate the love and hope of Jesus? We encourage you to visit [Joincfid.com](http://Joincfid.com) and explore the possibilities of partnering with a firm committed to grow with you in both faith and business.





## The Details

We currently manage 8 unique BRI strategies, and we are constantly evaluating the need to launch more. Within each strategy are different risk-based allocations. The standard minimum for our managed investment strategies ranges from \$25,000 to \$100,000 but can be as low as \$7,000. Different fee structures are available.

## The Strategies

**Vision CFD4:** A low minimum and less diversified investment strategy utilizing both BRI mutual funds and ETFs.

**Combination:** A multi-faceted strategy utilizing BRI mutual funds, ETFs, and screened individual equities to maximize diversification and minimize volatility.

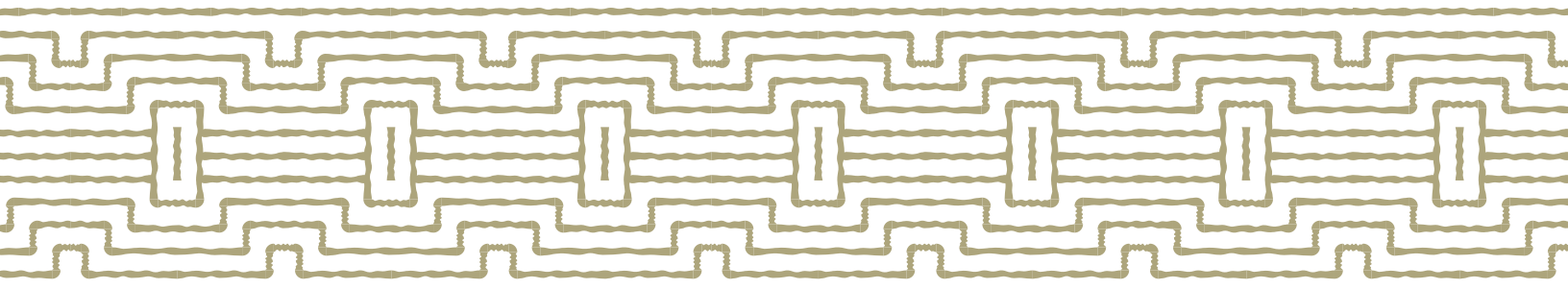
**Purpose Funds:** A strategy open to all mutual funds and ETFs with a BRI mission, striving to maximize diversification and minimize volatility.

**Income:** A strategy that employs screened individual stocks, primarily mega large cap value and blend for equity exposure, and mutual funds and ETFs for fixed income exposure.

**Harvest Growing Dividends:** A strategy that employs screened individual stocks with a 25 year minimum history of paying and rising dividends, large cap growth and blend for equity exposure, and ETFs for fixed income exposure.

**Divinity ETF:** As the name suggests, a strategy focused on Inspire Funds, utilizing a majority of Eventide ETFs and incorporating additional BRI ETFs and mutual funds that strive to meet Inspire screening criteria to achieve diversification.

**Auxano:** Only available in an Aggressive risk tolerance as a non diversified strategy offering. This strategy is all individual equity positions focusing on growth.





Scan this QR code to download this document or access additional resources.

**[Joincfd.com/resources](https://Joincfd.com/resources)**

BRI Money Management 01212026